

The Micro Fence Circle Jig

13160 Saticoy St. N. Hollywood, CA 91605 Phone 1-800-480-6427
 Email: microfence@microfence.com Website: www.microfence.com

Circles Larger than 48" (without Longer Guide Shafts): Out of the box, your Circle Jig will make circles up to just over 48", depending on the diameter of your router's base and, of course, the size of the bit you are using. If your job requirement is greater than 48", the jig may be mounted on any length extension you wish to fabricate using the 6-32 threaded holes that are on the underside of the trammel bars. Securely fasten **both** rear and spindle assembly bars to the end of a strip of approximately 1/4" thick material, (masonite, plastic, plywood or aluminum), that measures 3 1/2" to 4" in width. You should utilize all four tapped holes to maximize rigidity. Use flat-head screws and countersink them so your jig will slide smoothly over your work surface. Drill a hole, or series of holes for the trammel point on the centerline of this extension strip at whatever position your job requires. (See Figures 6 & 7)

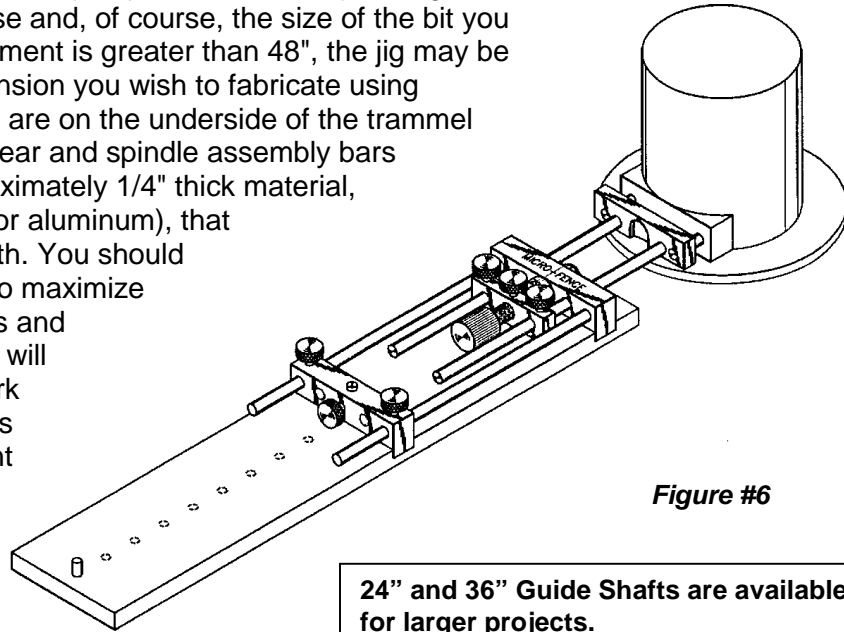


Figure #6

24" and 36" Guide Shafts are available for larger projects.

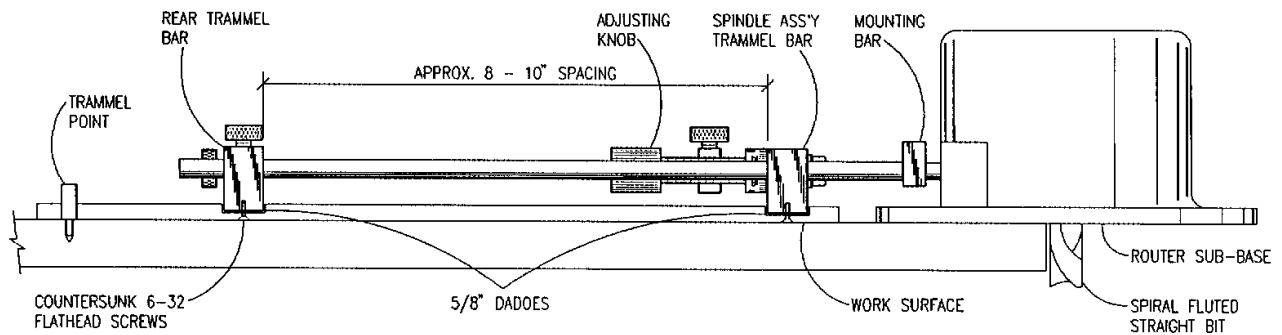
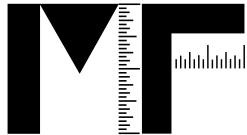


Figure #7

Note: Pay particular attention to keep the entire jig parallel to the work surface. It may be necessary to dado your extension strip with 5/8" slots in which to mount the circle jig's trammel bars. We recommend an 8" to 10" spacing. (See Figure 7).

Note: When cutting larger circles, it may be advisable to enlist the help of another pair of hands to keep pressure downward on the centerpoint while you operate the router. This will eliminate the possibility of the trammel point lifting. A "dry-run" with the router switched off should tell you when this would be preferable.



The Micro Fence Circle Jig

13160 Saticoy St. N. Hollywood, CA 91605 Phone 1-800-480-6427

Email: microfence@microfence.com Website: www.microfence.com

Internal Circles:

In operations such as loudspeaker manufacture or circular frame generation, both inboard and outboard cutting surfaces of the bit are in contact with the material. A starting hole may be drilled to allow start-ups with the router bit clear of the work. ***This is a good safety practice with either plunge or fixed-base routers.*** Be sure to clamp or fasten both interior and exterior portions of the material ***securely*** to avoid movement and possible kick-back scarring when final cut-through occurs. We recommend that the cut-out portion be screwed or pinned down to a flat sub-surface, insuring that your trammel point position will remain secure before, during and after the cut execution. This practice will allow concentric cuts to be made for final diameter dimensioning or for rabbeting to accept speaker rims.

There are some varieties of two-sided tape that can be used very effectively for fastening down the work piece. Micro Fence offers 2" wide rolls that can be ordered from us at 1-800-480-6427.